

# Cosmic Overview

## July Full Moon Partial Eclipse



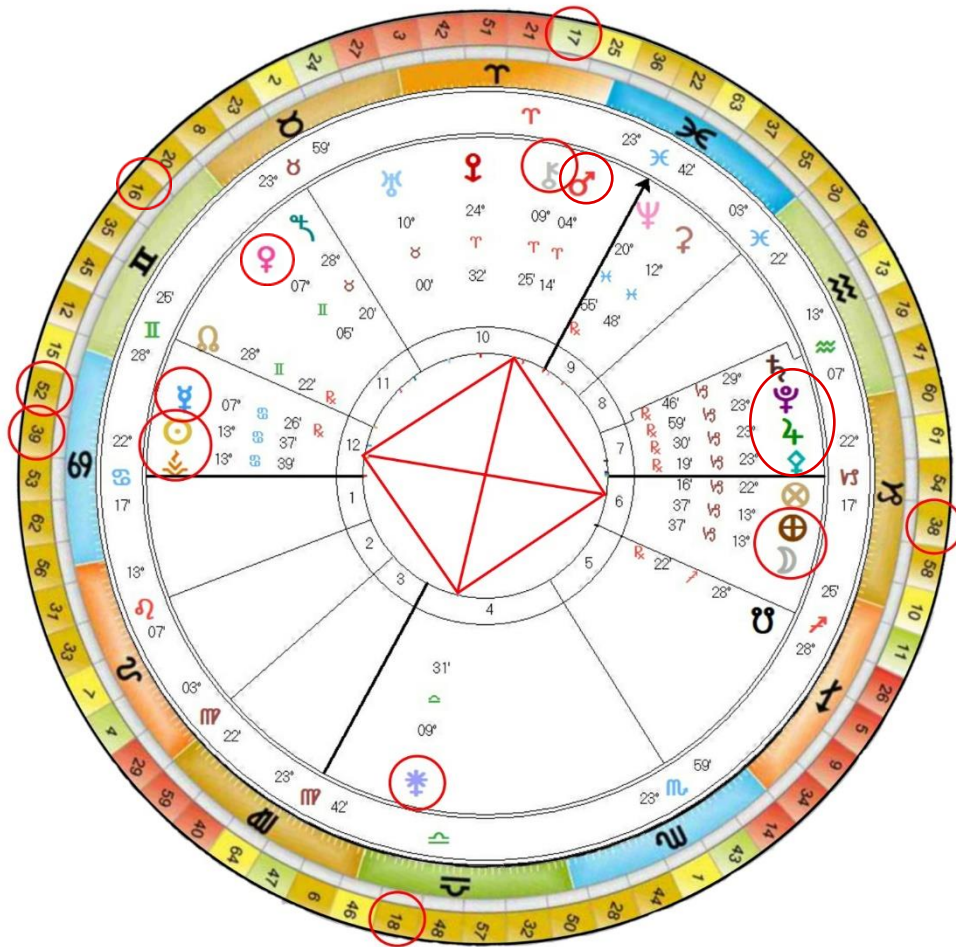
*Happiness is not a matter of intensity but of balance and order and rhythm and harmony.*

Thomas Merton

*'Your task is not to seek for Love, but merely to seek and find all the barriers within yourself that you have built against it'*

Rumi

# CHART FOR FULL MOON LUNAR ECLIPSE



Full Moon 5<sup>th</sup> July 2020 5:43 BST London UK  
<https://www.timeanddate.com/moon/phases/>

Following on from last month's Solar eclipse we have a penumbral Lunar eclipse, a darkening of the Moon's surface at the time of this month's Full Moon, which continues and accelerates the heightened momentum and focus that we are all passing through this year as old Shadow patterns, are brought to the surface to be released and realigned in order to move us into the next evolutionary curve.

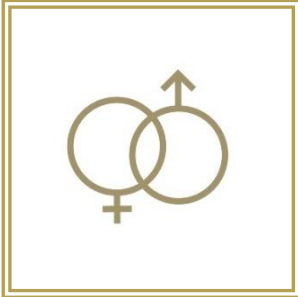
The June Solar Annular Eclipse was highlighting overall divisions and boundaries that are created via countries and territories, which we are now witnessing via the actions of China and Hong Kong, but this Lunar eclipse seems to be being directed to the heart of each individual to the divisions that lie within.

You will see from the above chart that at the time of a Full Moon the Moon and Earth are directly opposite to the Sun, and here they are at 13° Capricorn 37 and 13° Cancer 37 respectively. There can be a sense of Division as the Conscious/Sun and the Subconscious/Moon oppose each other. However, at the time of a Full Moon and especially when there is an eclipse, there is the potential for the conscious left/male and subconscious right/female hemispheres of the brain to be brought into balance through transmutation and realignment.

To assist in this process Chiron at 9° Aries and Juno at 7° Libra create a Fixed Cardinal square – Chiron holds the potential to heal old wounds held within the subconscious memory and Juno brings alignment to the Male Female polarity within each individual and also within partnerships. So, this Full Moon has much to do with healing the most ancient of divisions – the archetypal division between Male and Female that has existed since leaving the 'Garden of Eden'.

This division does not just refer to the Man and Woman but also to the very structure of our being – the electro-magnetic circuitry that flows through our cellular system - when it is not in balance – we are not at peace – we feel that something is missing – living in a state of agitation.

So how will the Gene Keys that are being activated at the time of the Lunar eclipse assist in this transformation? The Sun is on Gene Key 39 known as the **Tension of Transcendence** moving through **Provocation to Dynamism** to **Liberation**.



*'The 39th Shadow is like a cobra waiting to strike. We most often see its manifestation in our personal relationships. **This is the Shadow of Provocation, or in everyday language button pushing.** The 39th Shadow has a single goal – to provoke. If you are provoked by a person, any person, then you are under the influence of the frequencies of this Shadow. The power of the 39th Shadow over human beings lies in our tendency to take things personally. **The astonishing reason for this is that we think we exist as individuals, whereas in fact we are quantum patterns in an ever-changing web of energy.'***

**'The raw energy of the 39th Gift - the Gift of Dynamism. The other aspect of the 39th Gift is that it knows no fear.** As you make the transition from child to adult and your personal and cultural conditioning gradually take you over, you experience a decline in your natural Dynamism. Having said that – no matter how good or bad the upbringing may have been, all conditioning can be reversed. This involves a journey of awakening in which you raise your own frequency back to its original state....

**The real essence of the 39th Gift is to touch other people's spirits in a way that helps them break out of their traps and into higher levels of freedom and energy. A person living out the 39th Gift unleashes a tidal way of creative activity wherever they go.'**

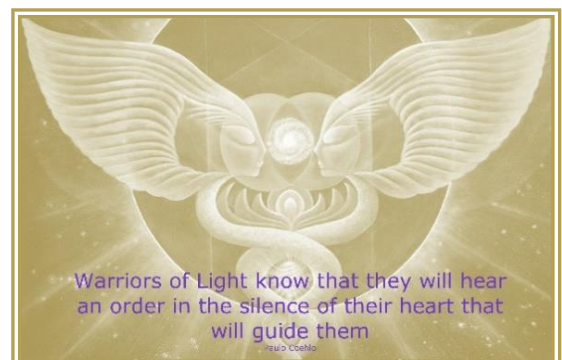
*'The by-product of Dynamism is that it serves many people which in turn raises its vibration. The 39th Gene Key is highly individualistic - it has to be so as not be taken in by the status quo. **Unique creativity has to break out of all conditioned patterns in order to rise to genius.** At the Siddhic level an interesting thing occurs when all this genetic pressure breaks through to a higher dimension. Consciousness merges back into the totality which means that it has to give up its greatest gift – individual freedom. Only in giving up the illusion of your individual freedom can you receive an even greater gift – **the Liberation of Being.'***

The Moon and Earth at the time of this penumbral eclipse are on Gene Key 38 known as the **Warrior of Light** so how synchronous that Vesta, at 13<sup>o</sup> Capricorn, is so aligned with this moment in time, for Vesta is the Goddess of the Flame, the archetype of the Sacred Fire – the Light Within. Here we are being asked to move beyond the Shadow of **Struggle** to the Gift of **Perseverance** ultimately leading to **Honour**.

*'At the Shadow level of the 38<sup>th</sup> Gene Key there is a stubborn persistent need to fight no matter what the outcome. **More often than not this Shadow manifests in relationships - these kind of dynamics grind down the love within the relationship and the fighting becomes an addictive need.** This Shadow is not an archetype that thinks - if threatened it reacts. Struggle is a pattern that locks you into a certain breath pattern that makes you forget yourself – **to break the pattern simply stop and take a conscious breath.'***

*'As with the 39th Gift the 38th Gift has a strong link with the archetype of the warrior. Wherever there is a fight for a higher purpose especially against insurmountable odds, there you will find the 38th Gift stretching itself to its limits.*

**The 38th Gene Key sets the pattern of a human struggle – the Struggle of all form to reach Spirit.** Perseverance is the most essential attribute of the inner warrior because the darker forces of human instinct are so deeply embedded in our nature. People in whom this Siddhi manifests are the highest form of warrior. '



*'They become our Holy Warriors those who cannot be tarnished by the world. As the Warrior of Light the 38th Siddhi does not fight the lower nature; rather it absorbs the forces of darkness deep inside itself through its action and in doing so shines out with immense purity in the world.'* *'Whenever a Siddhi dawns in a human being, its programming partner is also activated. Thus the 39th Siddhi of Liberation unleashes a chain reaction resulting in a stream of dynamic liberating energy lasting for generations and generations.'*

Chiron at 9<sup>o</sup> Aries is on Gene Key 17 along with Planet Mars, which is the planetary energetic underpinning action and outward movement – our individual drive and ambition – our personal will. Mars has just moved into Aries and as the planetary ruler of this Constellation it give an added intensity to the dynamic. Mars will be in Aries for the next six months, which is unusual as it normally passes through constellations in around one and a half months, but it will be going retrograde in September, all adding to the sense of a deep internal review of one's personal actions and reactions. With Chiron and Mars being together at this time there is the potential for Chiron to heal the painful actions that are manifesting through fear, insecurity and a sense of isolation.

The 17<sup>th</sup> Gene Key, known as the **Third Eye**, is moving through **Opinion** to **Far-Sightedness** to **Omniscience**

*'The 17th Gene Key Shadow of Opinion is paired with the 18th Shadow of Judgment. These two qualities epitomise the logical left hemisphere of the human brain, which at the Shadow level creates nothing but division because the mind is based on seeing and challenging narrow aspects of the whole, rather than the whole itself.'*

*'This Gift has a purpose in that it is to understand the minute mechanics of life as well as seeing the whole picture. The true purpose of the 17th Gift is to uphold Integrity, by challenging all misrepresentations of truth in the world. The very quality that leads to narrowmindedness at the Shadow frequency has a mission to create open-mindedness at the Gift frequency.'*



*The 17th Gift has the ability to see higher dimensions and realities - looking ahead to the future and linking one phase of evolution to another. It is working with the Gift frequency that the process known as the opening of the Third Eye begins. This Gift brings access to a whole new inner language that circumvents the need for one sided, dualistic expression.'*

*'The 17th Siddhi directly corresponds to the open Third Eye. Where seeing and the seen are one. At the level of the 17th Siddhi, Consciousness sees through you rather than you seeing through it. When the 17th Siddhi comes into the world it comes like a Divine afterthought. It is one of the seven powers of Grace. It is where the body becomes an instrument for Consciousness and there are no borders, levels, opinions or past lives for this is a Siddhi that sees and knows only Perfection.'*

Juno on 9<sup>o</sup> Libra is on the 18<sup>th</sup> Gene Key **The Healing Power of the Mind** moving from **Judgement** to **Integrity** to **Perfection**. Juno links to the internal balancing of the Male and Female within, the Ida and Pingala energies that flow through the body - the Mystica Unio or Sacred Marriage - again underpinning the theme of the need to bring the subtle energetic pathways flowing through the left and right hand brain into a neutral central path that will align to higher consciousness.

*The 18th Shadow begins in your childhood and it gives rise to a collective phenomenon in the world known as the 'victim mind'. The 17th and 18th Gene Keys are partners and as such the Shadows of Opinion and Judgment create much misery in the world. The 18th Shadow, however, holds a key secret, that all judgement is a self-Judgement. The key to raising this level of frequency is to realise that everything external in your life is a mirror of an internal process seeking resolution.*

*The 18th Gene Key holds the keys to human conditioning. This Gene Key is about the physical, emotional and mental boundaries that you meet in your life. The 18th Gene Key will continually bring you back to any recurring issues rooted in your childhood so that you may release what does not serve you and equally you can assist others to release their conditioning. Integrity uses Judgment in an objective and impersonal way. This is the Gift of the 18th Gene Key - not to use or take Judgment personally, but to learn to judge from the heart*

'Someone demonstrating the 18th Siddhi is above the victim mind – when they look at someone, even someone who appears genuinely evil, they will only see the Higher Self hidden in that person. **By holding this high thought frequency they influence hidden currents of energy that raise the frequency of others. This is called Siddhic thinking and it involves thinking with the heart.**



*The 18th Siddhi serves a very mystical purpose – it heals the split in the mental plane itself bringing humanity closer and closer to its realisation of Oneness. It cannot and will not sit still until this great rift in the world mind has been healed. The 18th Siddhi is the source of the tradition of the Bodhisattva Vow. **The Bodhisattva Gene Keys keep returning to the planet as individual human beings whose sole purpose is to build this collective vision of Perfection on the material plane.'***

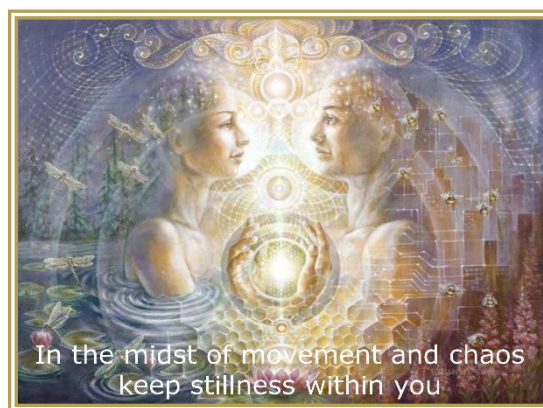
Mercury, the planet that underpins our communication and thinking processes is making a 90° angle to both Mars and to Chiron and so again we have the potential to truly see how our thoughts create our actions and how, when not coming from the heart, can so easily create pain. With Chiron connecting into both of these planets we are being given the opportunity to heal the mental distortions and interferences which create so much division in this world.

Mercury on Gene Key 52 speaks of this distortion this sense of deep unease, in moving from **Stress** to **Restraint** to **Stillness**.

*'Most humans forget how to breathe as they grow up - **the 52nd Shadow is deeply connected with the function of the adrenal glands – the flight or fight response.** Until human beings experience their unity will all of creation they will create and be driven by this underlying Stress.*

*'No Gene Key is more fundamental to human life than this 52 Gene Key – it strikes a balance between two extremes of energy – activity and passivity. **This Gift has the potential to slow down time – to take the Stress out of the environment.** At its deepest level, it contains the seed that will one day bring all human beings into a perfect organizational Unity. This seed contains all the necessary ingredients that will be needed in the journey ahead, for it is the seed of your individual destiny. The Gift of Restraint is about non-interference.'*

*'The Siddhi of Stillness can greatly help us to understand this concept of transcending frequency. When a being attains realisation through the 52nd Siddhi, some intriguing things occur. Since all frequency and energy patterns are experienced as stopping you find yourself sitting at the Heart of all Creation. **The incredible sheath of fear and stress created by the world aura can no longer touch you.** At the Siddhic level adrenaline is transmuted into rarefied hormones and neurotransmitters that induce Bliss and Stillness throughout the body. **This influx of Stillness into our planetary aura will allow millions of people to follow the true destiny into far wider service of the whole.'***



This Lunar Eclipse also has the additional powerful planetary focus of Jupiter Pluto and Pallas Athene all together in the sky at 23° Capricorn.

Pallas Athene, the Goddess of Wisdom represents the principle of creative intelligence giving birth to thoughtforms. Being with Jupiter and Pluto it reinforces how we need to be fundamentally aware of how our thoughtforms manifest powerfully. It also suggests that much that is hidden within the subconscious will be brought to the surface for healing. For Pallas Athene conjunct Jupiter symbolizes the search for truth and when conjunct to Pluto, Pallas brings about a profound, transformative urge to lift and to expand consciousness out of old Shadow patterns, finding ways to release deeply buried memory patterns that are held within the DNA and cellular structure.

Our highest potential is to be found in the integration of the Divine Feminine and Divine Masculine energies within ourselves. At the time of this Full Moon Mars, the Masculine principle, is in sextile/harmony with Venus, the Feminine principle, assisting the balancing and integration of these polarities. Venus is on Gene Key 16 known as **Mastery - 'For the one who has attained this Siddhic level displays Mastery over Creation'**

Each of us, whether man or woman, have feminine and masculine wisdom and attributes. However, often one or both of these energies is out of balance, silenced and wounded. Both men and women throughout history have been both the oppressor and the oppressed. When working in harmony, the Sacred Union of the Divine Feminine and Masculine energy circuitry, that flows through each of us, unites and heals and we become constructively Co-Creative with the Universe.

*'This is exactly what is beginning to occur on a planetary level. The master programme is beginning to assess and eliminate interference patterns, beginning with the smallest components – individuals. The current state of our Planet cannot be fixed from the top down. It has to be fixed at grass root level....the moment we begin to see relationships appearing in the world without interference patterns, we will know that the core human fractal is rebuilding itself from the bottom up and that ancestral memory patterns within the DNA are being resolved.'*

So before closing it seems relevant to share something that, synchronistically, was received from a friend's post, whilst writing this Review, which in many ways echoes all that is held within the deepest memories of our psyches that underpins so much division - for your contemplation.



### **'There was a Time when They were One'**

*Long, long, long ago, the Great Man and Great Woman were as One Being, standing side by side in Equality - Strength, Power, Truth, Authenticity, Infinite and Divine Love – a melded Heart and shared Soul.*

*But then, over days and over countless years, a grey began to emerge in the world. Subtle and insidious it flowed and darkened, gained strength, left the skin prickled with premonition. The stomach became heavy with a change that could not be seen. And then, it was upon them. The darkness rose as a tsunami, pushed the great man and the great woman apart, buried their utopia in dross.*

*The Divine Feminine was targeted first. Her gentle nature was punished. Her healing voice silenced. Her very nature, the Womb of Creation and Love, suppressed by unspeakable traumas – lifetime after lifetime after lifetime.*

*The Divine Masculine witnessed in horror as his beloved was torn apart, dismantled from his Soul and from this world. His garden had been clipped of roses and all that remained were the tangled thorns. The Great Man fell to his knees in despair, the pain too deep to endure. His eyes turned black, his body stone. He built weapons to slash at the darkness, to attack that which took the Light. He crafted armour to protect his body. He wore the*

*strongest breastplate to cover his heart and carried a shield to keep the grief and the wounds from breaking him in two.*

*The wars began. They covered every continent, invaded every life. Endless centuries of torture, persecution, maiming and killing. The atrocities defended with a myriad of excuses: religion, righteousness, honour. But it was all pain...a world fighting against its own injuries as a trapped animal chews its limb for freedom.*

*Thousands and thousands of years later, the wars changed. They morphed from the battlefields to the corporate and material world. Swords were replaced with money, status, power, big cars and houses, political rhetoric. A battle all the same. A deep deadening. Around and around, lost. Weapons were down but the armour remained, welded tight into the psyche. Hearts hid from feeling anything that touched upon memories of loss.*

*And then it happened. As slowly as the darkness had entered, it began to leave. The Divine Feminine felt the call first, felt her Soul cracking from within, her Power emerging, her Light pushing forth again. All that had been taken from her rose and the grief was fresh and raw, but she clawed through it, dug and crawled from her place of hiding and stood in truth and strength again.*

*Tenderly, she reached out to her Beloved, the Divine Masculine, her wounded warrior. But his scars were too deep. He ran. He ran from the gentle touch, the soft words of Love that ripped at his Soul. The pain of losing her, the pain of being helpless as she was dragged from him and nearly destroyed, was too much and so he ran. The fear was too great. All that had been lost. All the pain and suffering of a millennia followed her and he hid behind his shield for protection.*

*Until the breastplate and the armour began to choke him. The hard edges of the metal cut into his muscle, left him agitated and uncomfortable. He tried to run but his legs grew heavy, stuck in sludge. "Just leave me be," he begged.*

*But the great love and tenderness followed him silently. His Beloved sat before him, placed her hands upon his wounds and kissed his scars. She unclasped his armour, removed the breastplate and pushed aside the shield. And this Great Man fell into her arms and wept into her neck. He mourned for her loss and the darkness that had followed, for his acts of savagery and the wars that he had raged while blind with pain. And she smiled into his tears, rested her palm atop the quaking heart, let the white Light shine gold into his Being.*

*His tears dried. His heart breathed. He was free now. The battles, the wars, were over.*

*She took his hand and they rose together again – As One.*

Harmony Verna



As we are all passing through these intensive and transformative times, may this Lunar Eclipse assist our awakening in addressing and releasing the core memories, held deep within our cells, which continue to create division until acknowledged and healed. May we all Rise as One.

*Love and Blessings.*

2<sup>nd</sup> July 2020

Extracts Gene Keys by Richard Rudd