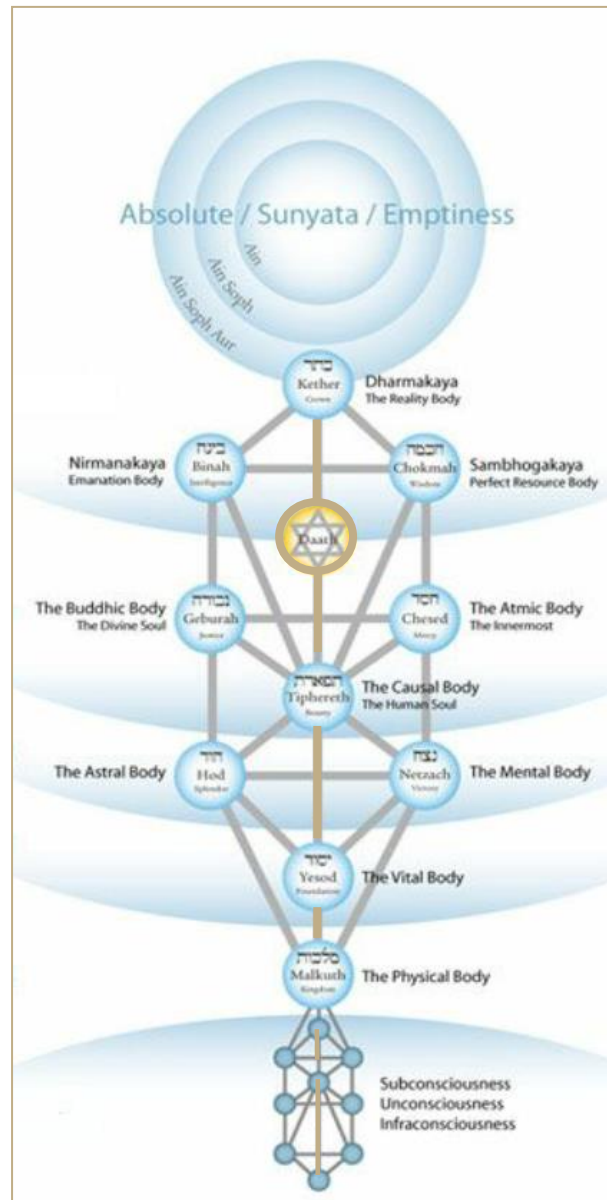


Cosmic Overview

Sagittarius New Moon Eclipse 2021



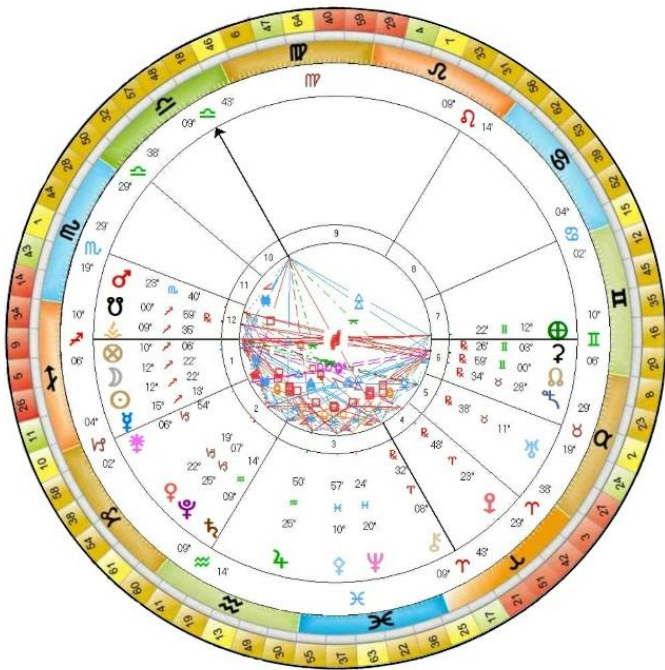
'Self is a sea boundless and measureless.'

Khalil Gibran

*'Truth is an arrow and the gate it
passes through is narrow'*

Bob Dylan

'I AM' a Beam of Focussed Light



The New Moon this month will take place at 12⁰ Sagittarius 22 on either the 3rd or 4th of December depending upon where you live. This chart is drawn for 4th December in London UK at 7:43 GMT

At the time of this New Moon there will be a Total Solar Eclipse which follows on from the Lunar Eclipse that took place at the time of the Full Moon on 19th November. This Eclipse is falling primarily over the Antarctic Circle – passing close to South Africa and to Southern Australia, but the resonance goes out across the world and will be underpinning the energetic grid for the next six months.

Sagittarius is very much a human sign. The Constellation of Sagittarius flows with the 4th Ray of *Harmony Through Conflict*, the 5th the Ray of *Concrete Knowledge* and the 6th Ray of *Devotion*.

At the personality level, the planet Jupiter with the 2nd Ray of Love and Wisdom rules, which initially creates an expansive, strong, desire nature, expresses through the 4th Ray and the lower mind as desires, opinions and judgements, but eventually a pathway can be found that leads to the Initiation of the *One Pointed Disciple*, represented by the arrow in the bow, when the Higher Mind finds a focussed higher expression.

The arrow represents a clear shaft of Light released by the Higher Mind. The third Ray that is held within the Sagittarian Constellation is the 6th Ray of *Devotion*, which is ruled by Mars which creates, at times, an almost zealot like, one pointed focus but which ultimately is seeking to bring Love and Unity to all people on Planet Earth.

From the Soul level the Earth is the planetary ruler of Sagittarius and becomes the prime focus for the anchoring of the Higher Mind, as Saturn and the 3rd Ray of *Active Intelligence* refine the intellect into intuition for further Spiritual unfoldment.

Mastery of the mind becomes the focus as the Higher Mind synthesises all of the intellectual faculties into Wisdom and through this transformation the Sagittarian becomes the true visionary and prophet. However, the Earth is central and important to the Sagittarian, for in order to serve the purposes of the Plan, for the evolution of humanity, the idealistic, expansive, and altruistic 6th Ray must be grounded in an Earthly realism and pragmatism.

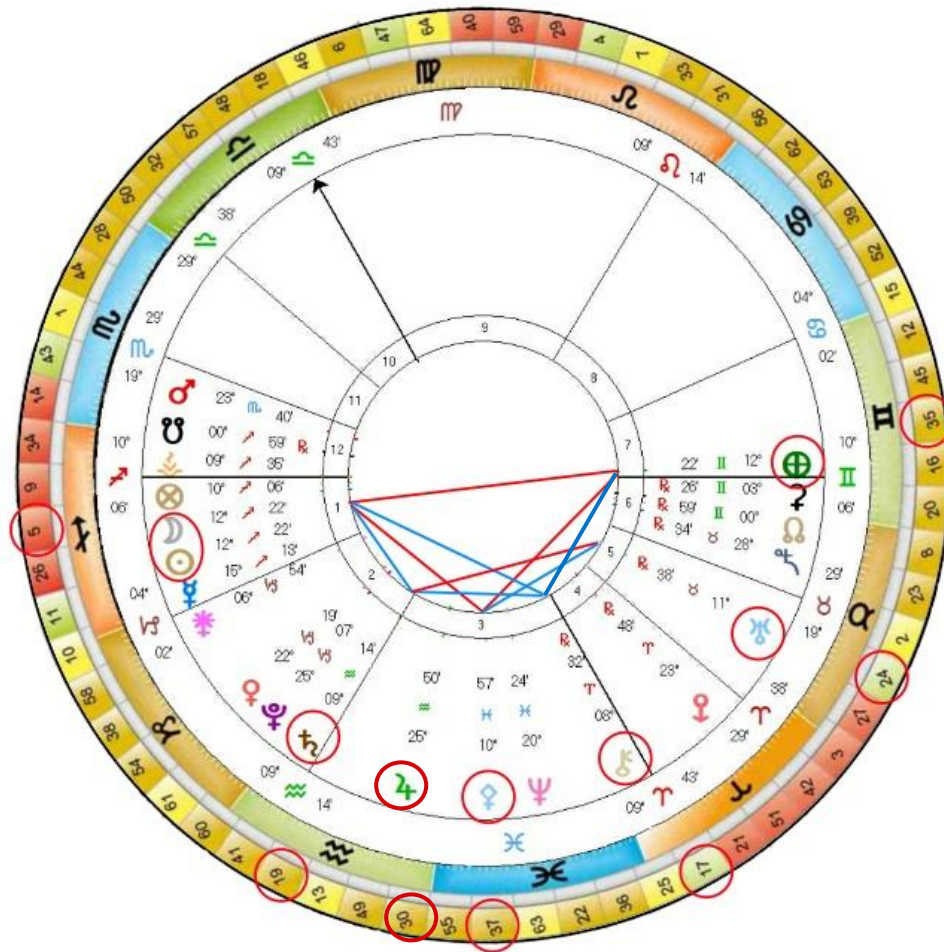
When passing through the Constellation of Sagittarius, energies are heightened, for when looking out from Earth into the night sky, we see that the greatest Light, the central point of the Galaxy, the Galactic Centre, is at 27⁰ Sagittarius and the maximum Magnetism, known as the Great Attractor flows through 14⁰ of Sagittarius, so the Constellation of Sagittarius would seem to intensify the push pull of duality, but ultimately, enlivens and expands our ability to move into higher states of awareness whilst anchoring the frequencies of Divine Light and Love for All.



'A good archer is known not by his arrows but by his aim.'

Thomas Fuller

Chart for the New Moon in Sagittarius



New Moon 4th December 2021 07:43 GMT London UK
<https://www.timeanddate.com/moon/phases/>

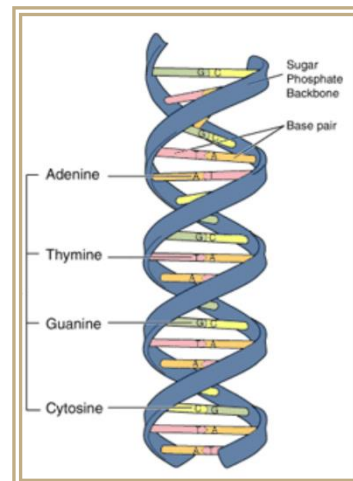
Over these last many months the sense of being at a crossroads, a pivotal point in our evolutionary journey, has been constantly highlighted. With Saturn and Uranus still creating a 90° aspect in the sky, this friction between opposing viewpoints and opinions continues to play out with the third and final exact square between Saturn and Uranus taking place this month on Christmas Eve 24th December. However, this tension is likely to still continue for some time as Saturn and Uranus come back once again to closely square each other in October 2022.

In simplistic terms the tension is being fuelled from our individual and collective sense of ‘Order’ and ‘Freedom’ and the underlying Truth of what these beliefs mean both individually and collectively to our innate rights.

As we have now entered the Age of Aquarius, Truth, Humanitarian Rights, and a sense of Universal Love are the potentials that are being ushered in. From the egoic personality level, both Saturn and Uranus are the rulers of Aquarius, which is where the current dramas are taking place, but from a Soul level Jupiter rules Aquarius and activates the 2nd Ray of Love and Wisdom, so let’s look more closely at this chart to see what is held within this moment in time and how we might be assisted to move into this higher level of awareness.

As already mentioned, 14 degrees of Sagittarius links to the Great Attractor’s magnetic field and as such will be informing this current New Moon and Eclipse, for the Sun and Moon are at 12° Sagittarius 22 on Gene 5 known as the **Ending of Time** moving through the Shadow of **Impatience**, to the Gift of **Patience** to the Siddhi of **Timelessness**.

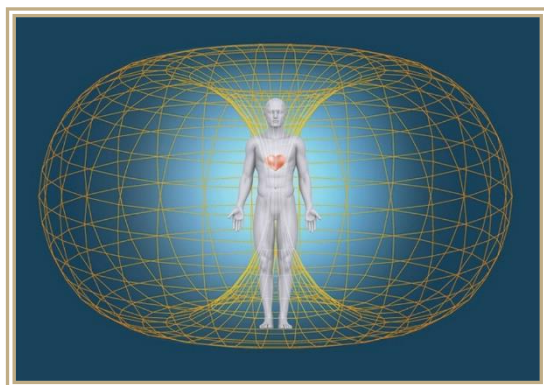
'It is the 5th Gene Key that really forms the backbone of the 64 Gene Keys. Containing all the codes and patterns of life the 5th Gene Key represents the great digital library of Consciousness in form, all concealed within every single living cell. The 5th Gene Key is one of those Gene Keys that is found in all life forms since it alone maintains the rhythmical patterns that allows an organism to stabilise within its particular environment **It is the pulse of Life.'**



'There is a deeply engrained collective fear of death and a belief that there is no underlying order to the Universe. From time to time, both in our personal lives and at a collective level, natural mutations occur when the stability of life is overturned. **This feeling is untrue – but it is this insecurity that underlies Impatience** – in the modern world you can really feel this deep-seated fear rippling through humanity.'

'Patience is the natural ground of your being whereas impatience arises out of fear and conditioning. Patience is about trust. If you trust in Life, you will trust Life in every moment, even the challenging moments, and in so doing you will always remain in the flow. As a vital element of the chemical family known as the Ring of Light the 5th Gene Key plays a profound role within your genetics. **The amino acid, threonine determines the blueprint for how your individual cells trap light and convert it into energy.'**

'The more you are able to settle into a deep trust and Patience with the rhythm of your life, the more your heart will open and the softer and more yielding you will become in your attitude to everything and everyone. You will begin to discover a higher functioning of your DNA – a code within a code. Through the magnetism of your living aura, you draw in or limit the frequencies of light deep into your cellular structure. The more openhearted you are the more you magnetise higher frequencies into your DNA'



'To live an open-hearted life is to operate at peak health and, therefore, override any genetic predispositions, as outlined in the map of the human genome. What the Shadow frequency views as a problem may actually be a higher genetic mutation waiting to be unlocked. Only the human spirit can unlock the deepest secrets in your DNA.'

'It is in the 5th Siddhi that the great secret known as Enlightenment lies waiting. The highest code can only be awakened by the flood of high frequencies contained within the Spectrum of Light.'

'The more you open yourself to the higher frequencies of Light the more heightened the vibration becomes within your cellular DNA. Awakening usually occurs in a rhythmic manner in that your body is periodically flooded by higher Siddhic frequencies prior to full blown Enlightenment.'

'As you approach the Siddhic threshold, the frequency of your body begins to approach the speed of Light and when your frequency does register at the speed of Light, Time finally dissolves and Pure Being is experienced within a state of Timelessness.'

And the Earth at the time of the New Moon is at 12⁰ Gemini 22 on Gene Key 35, known as **Wormholes and Miracles**, moving through the Shadow of **Hunger**, to the Gift of **Adventure** ultimately into the Siddhi of **Boundlessness**.

'At the Shadow level, awareness of one's true inner Essence is being diverted out into form. One becomes involved in progressing in the outer world at the expense of the inner world.'

'Hunger comes from the interference of shadow frequencies within the gene pool. The individual is looking outside of self to satiate the genetic hunger for progress.'



*'So, we either become attached to the external means of fulfilment, or we blame the external means (often a person) for not fulfilling our Hunger and move on to something or someone else. **However, no matter how you try to satiate your hunger in the outer world it will never be enough. At the root of this hunger is a chemical imbalance.** Low levels of serotonin are fuelling this pattern of disappointment and blame leaving humanity unable to find lasting peace. **The easiest and quickest way to change your life for the better is to give your love unconditionally in as many areas of your life as you dare.'***

*'To break through the Hunger barrier is to break into the heart. **Love is the only force that can bring an end to the Hunger of the 35th Shadow.** When progress turns inward and one's Hunger for Adventure is no longer outside, but is focused within the nature of Being, the 35 Gift begins to flower. This is where the Human Spirit breaks free from the limitations of mind.'*

*'**The 35th Gene Key stands alone within the codon ring known as Miracles.** The 35th Gift is the only place within all human DNA, where human beings have a choice in how their reality is constructed. As you may imagine this is quite an important codon within human evolution.'*



Every human being has the choice
to take a path of love.

Richard Rudd

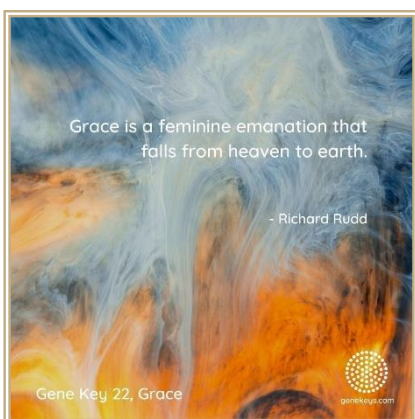
Gene Key 35, Boundlessness

genekeys.com

*'**A new frequency is reached that allows awareness to flower and Love to flourish.** This is the great Adventure that you take as the 35th Gift enters into your being – you enter a process of alchemical co-creation within your own body.'*

*'**There is a hidden wormhole in the DNA - a shortcut to the Divine. This is where pure unconditional Love can break all the laws of the Cosmos, including all genetic laws.** It is allowing human beings to take charge of their own evolution and outwit the global genetic programme. With love, serotonin production is increased and stabilised within the chemistry of the human brain. **Love has nothing to do with another separate person but is the connective tissue underlying all creation.'***

*'The 35th Siddhi invites human beings to expand their consciousness so far that they leave the sphere of evolution altogether. **Boundlessness is Consciousness.** When the Siddhi of Boundlessness enters the world, it allows consciousness to penetrate right into the heart of matter, which bends the Laws of Matter. **Such a Siddhic Being represents a shortcut through evolution itself and many people can experience huge awakenings and miracles around such a Being.'***



Grace is a feminine emanation that
falls from heaven to earth.

- Richard Rudd

Gene Key 22, Grace

genekeys.com

*'In this respect, the 35th Siddhi also finds a strong connection with the 22nd Siddhi of Grace, since it is Grace that decides when, where and to whom a miracle will occur. **We can draw great comfort from the fact that deep within the DNA of each and every one of us the 35th Siddhi lives as a constant reminder of the infinite possibilities of a life lived in the name of Love.'***

The Sun Moon and Earth are making a 90° angle to Pallas Athena at 10° Pisces on Gene Key 37 known as **Family Alchemy** – this Gene Key has the Shadow of **Weakness**, the Gift of **Equality** and the Siddhi of **Tenderness** continuing the unfoldment of the Feminine Magnetic principle.

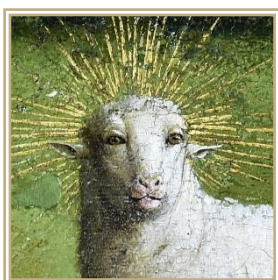
*'Much about this 37th Gene Key concerns the nature of a force that is perceived as weak but that inevitably shows itself to be the opposite. **It links closely to the Piscean Age that we are now leaving. The 37th Shadow represents the inequality between yin and yang forces on our planet.** The 37th Shadow is undergoing a major mutation and through the inner rebalancing within the human psyche the fabric of our society is being forced to change. This uprising of the Yin force is beyond gender – many women today are under the impression that the time for women is coming and the time for men is over – this **attitude** is*

simply another form of the 37th Shadow which always over-emphasises one aspect of the polarity. **It is in the human heart and its ability to grasp the holistic essence of life that our true collective future lies. In an individual human being this change translates as the mind serving the heart.'**

'It is in the 37th Gift of Equality that a great hope is presently arising for humanity. Equality is such an easily misunderstood term. **Equality is a living ideal that lifts people out of the game of victims and winners or strength and weakness.** When you operate out of this Gift you are living directly out of your heart and all else is secondary. The giving that comes from being in your heart leads to Equality because it is based upon Equality. **The human heart carries this equalising force wherever it moves and eliminates divisions in others by treating everyone with respect.'**



'The mind fears that Equality will create a world in which everyone is the same, however true Equality is based upon respect for individual uniqueness – indeed it thrives on it. **The 37th Gene Key represents an evolutionary phase that is now coming to an end, which means that something new must also be born from it.**

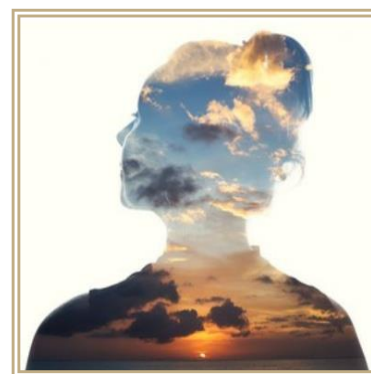


'The Christ lineage must give birth to another dimension and this dimension concerns the role of the feminine archetype. The 37th Siddhi is the Siddhi of Tenderness and Tenderness is a quality most often associated with the exchange of Love between a parent and child. Tenderness in particular is an archetypal motherly essence. **Jesus himself is universally connected with the figure of the lamb whose essence is represented by this 37th Siddhi.** We, humanity, are the lamb and the Universal Spirit holds us in Tenderness, as a Mother cradles her child.'

'As we move beyond the tribal and blood definitions that have dictated our traditional lifestyle for so long, we will see how limiting our current definition of family really is. **The 37th Siddhi is an upsurge of consciousness that will slowly unite human beings as the 55th Gene Key frees us from our victim consciousness.** Tenderness is a force to be reckoned with and as its programming partner the 40th Siddhi of Divine Will testifies, it is a force that has us a set in its sights. **In its very softness it is insurmountable, invincible and inevitable.'**

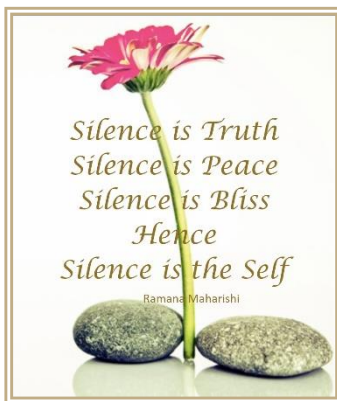
As for last month, Uranus is making a square aspect to Saturn and remains on Gene Key 24, known as **The Ultimate Addiction** – and is also linking to Pallas Athena in a 60° sextile aspect. Gene Key 24 holds the seed for our ability to come into a state of gentleness, peace, stillness and **Silence**, but to arrive there we have to move through the mental Shadow of **Addiction** and right now we are being guided and encouraged to step into deep contemplation of our mental patterning.

'**We humans come pre-programmed for Addiction and the main culprit responsible for this is our mind.** The mass consciousness of humanity is still dominated by the archaic fear and survival-based aspects of our brain. If you are influenced by the Shadow, there is always an anxious part of yourself that never seems to rest. The root of human suffering is wired into your DNA in the physical body and this in turn triggers the emotional body through desire. **Only by turning inwards can you face the addictive quality of your mind.** Your willingness to confront your mind creates the necessary pause or gap in thinking to disentangle the mind from the astral/emotional body.'



'**One of the best ways of exploring the gaps is through contemplation.** The secret of the 24th Gift is really one of the secrets of creativity itself. It is in fact an acoustic field involving the raising of vibrational frequency through your genetics. **In human beings this codon allows you to make quantum leaps in terms of the evolution of your awareness.'**

'The Gift of Invention brings in originality that is surprising to self as well as others. All the great insights that have driven human evolution, from the arts to the sciences, have come across the bridge of the 24th Gift.'



'The 24th Siddhi is a challenging Siddhi to write about because how do you describe Silence? Over the centuries human beings have tried all manner of techniques to stop the mind from thinking. Thinking can in fact be masked by certain techniques, but that temporary quietness is not the same as the pure Silence of the 24th Siddhi.'

'The Silence of the 24th Siddhi is a Silence that descends on you even though it already lives within you. True Silence reigns when the mechanism controlling your awareness moves from your head down into your solar plexus.'

*'For awareness to shift in this way there is a physical mutation that occurs – certain chemicals are created by the endocrine system – so that you no longer think – but are thought by Life. **When the mind ceases to think then all addictive behaviour also ceases – the ultimate addiction of believing yourself to be separate from Life is eradicated.***

*'This Silence does not necessarily denote physical Silence, rather it is an internal Silence in which you are permanently enfolded. **Only true inner Silence can bring an end to the Maya or illusion of separateness which is ultimately the healing of mankind's greatest fear.***

Saturn, whilst still square to Uranus, has now moved from Gene Key 41 to Gene Key 19 known as **The Future Human Being** moving through the Shadow of **Co-Dependence** to the Gift of **Sensitivity** to the Siddhi of **Sacrifice**.

'The 19th Shadow of Co-dependence has its roots deep within our tribal past. Co-dependence refers to the state of consciousness below independence. To be independent means to rely only upon yourself, whereas to be co-dependent means to rely on outside agencies. Our relationship to God or a set of gods is a co-dependent relationship because it is based on this need for outside authority.'

*'As long as man believes in a God outside of himself the frequency of our planet will remain at the level of the 19th Shadow. As we grow beyond Co-Dependence we discover that independence is an illusion, for in truth Life is, and always has been, interdependent. **It is through the Ring of Gaia that we must and will eventually see and will live, once again, in union with all beings that share this planet Earth.***

'People with the 19th Gift are likely to use their Sensitivity in any field where people are working together in groups. The 19th Gift is also the gift of touch. It does not have to be literal touch although it can be – many of these people are gifted healers or therapists. Their ability to unconsciously sense the needs of others means they are often seen as psychic.'

'There is a heightened awareness of other worlds, realms and kingdoms of life forms and the ability to communicate with them. The 19th Gene Key is one of three primary portals along with the 62nd and 12th Genes that allow humanity access to other evolutionary kingdoms within nature.'



'These kingdoms, which have often been referred to as the Angelic or Devic realms, are planes of consciousness that follow a similar evolutionary pattern to humanity but in parallel dimensions.'



*'The path of frequency through the 19th Gift goes from Co-dependence to independence and finally to interdependence. **Interdependence represents a quantum leap beyond the other two and its realisation is the future destiny of our species.** Through the 19th Gene Key you can see how each level of frequency has to transcend itself entirely. In surrendering your small self, you attain the realization of your ultimately greater self - **to Sacrifice your individual identity and experience yourself as one with all life as well as the Creator of it. This is the secret of mystical initiation.***

'The 19th Siddhi shares a profound connection with the 49th Siddhi of Rebirth. These two Siddhis represent the key mystical process that will eventually overtake the human species - the ultimate realisation that all sacrificial deaths lead to Rebirth.'

*'Life is a living chain of Sacrifice. Consciousness is now beginning to outstrip man and is reaching out for a higher form. **But the new form must emerge out of the old one, so deep within Human DNA new mutations are being triggered.** The 19th Siddhi contains the secrets of this mystical initiation. They are highly sensitised bridges to the new human and have the ability to siphon information about the new paradigm from behind the veil of the future into the present – **they see the new form emerging and do their utmost to prepare people for the coming consciousness shift.***

Chiron, the Cosmic body which unlocks the Light and frequency irradiating through the transpersonal planets down into the Earth plane is making a trine to the Sun and Moon and a sextile to both the Earth and Saturn. Chiron is on GK 17 moving through the Shadow of **Opinion** to the Gift of **Far-Sightedness** to the Siddhi of **Omniscience**.

*The 17th Gift is a mentally dynamic gift – it does not sit idly by with a philosophy of passive acceptance. This Gift has a purpose at that is to understand the minute mechanics of life as well as seeing the whole picture. **The true purpose of the 17th Gift is to uphold Integrity, by challenging all misrepresentations of truth in the world.** At the Gift level the individual sees the futility of identifying with a specific opinion.'*

*'Because the 17th Gift doesn't dictate direction in a person's life it is freed to do what it was always intended to do – **to differentiate between those patterns that lower your frequency and those that raise it.** Once freed from the Shadow frequencies of mass consciousness the 17th Gift has the ability to see higher dimensions and realities - looking ahead to the future and linking one phase of evolution to another. **This Gift brings access to a whole new inner language that circumvents the need for one sided, dualistic expression. Thus, Far-Sightedness can be said to arise directly out of the heart rather than from the mind.'***



*'Through the 17th Siddhi of Omniscience, the human mind will finally see the perfection and beauty of our Oneness with all of existence - where seeing and the seen are one. A single eye through which consciousness pours and where past present and future are a single eternal screen of consciousness. **These are the true seers and oracles.'***

*'At the level of the 17th Siddhi, consciousness sees through you rather than you seeing through it. When the 17th Siddhi comes into the world it comes like a Divine afterthought. It is one of the seven powers of Grace. **It is where the body becomes an instrument for consciousness and there are no borders, levels, opinions or past lives, for the Siddhic level sees an endless fractal pattern of life – repeating over and over – the same but always new – the serpent eating its own tail.** This is a Siddhi that sees and knows only perfection.'*

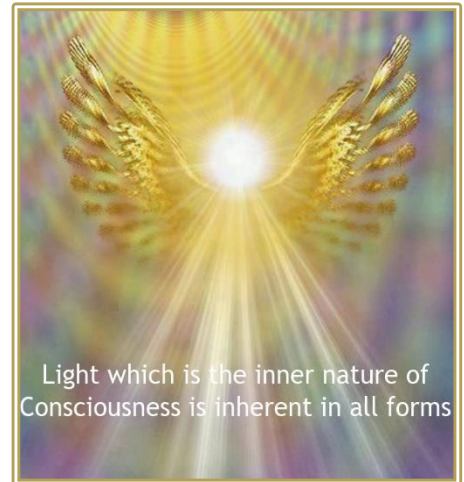


*'All other aspects of the mind are transmuted into the higher frequencies with the exception of this single eye – the mind's eye. The deepest irony of all life is caught in one famous mystic's words: **'God can only come and visit you when you aren't there'** or put another way, if you want to know what Omniscience looks like, you, the personality, have to cease to exist.*

And finally, if we look at the position of Jupiter, which is key at this moment in time – for Jupiter is the planetary ruler of Sagittarius from a personality level and Jupiter is also the planetary ruler of Aquarius from a Soul level – so the presence of Jupiter at the time of this New Moon and Eclipse is really pertinent to all that is unfolding into the Consciousness from the subconsciousness.

Looking at the chart you will see that Jupiter is at 9^o Aquarius on Gene Key 30 known as **Celestial Fire** moving from the Shadow of **Desire** to the Gift of **Lightness** to the Siddhi of **Rapture**.

*'The 30th Gene Key activates the Group Consciousness to hunger for experience. **Gene Key 30 is part of the Ring of Purification and it bonds with the 13th Gene Key Shadow of Discord and Pessimism.** In our Desire to experience life we make mistakes and gradually learn to evolve through trial and error. Humanity is designed to move through a vast evolutionary cycle in which it is progressively purified. **Such purification can only take place through the Shadow frequency since this provides the raw material for a higher state of consciousness.** Most of the fallout from this Gene Key resides within the Emotional Body/Astral Plane. Fighting an evolutionary force as powerful as Desire is what causes human beings so much suffering in the first place – **so what is the future for a race that is caught in such a paradox** – as ever the answer lies within the higher Gift frequencies of this Gene Key.'*



*'There are two possible human responses to a paradox – either you become tense or you surrender to it. The Gift of Lightness does not change your destiny. It simply allows you to view it from a different level of awareness. **However, the very shift to this higher awareness functioning always signifies a change in the script of your life.** As you move into the higher frequencies of the 30th Gift you begin to understand that beneath the thousands of desires that pass through your emotional system, each day, there is a single underlying desire that gradually becomes stronger and stronger – the desire to end your own suffering – this Desire leads all human beings on the path of Spirituality and inner inquiry. **It is the desire to Ascend - to be free.***

'The 30th Siddhi and its partner the 29th Siddhi represent an archetypal stream within your DNA that causes powerful mutations in your endocrine system leading to states of great Devotion and Divine Rapture. The 30th Siddhi is an unusual Siddhi in that it manifests as one of the great Divine ecstatic states. The process of transcendence through this 30th Gene Key directly mirrors the purification of the Astral Body and its assimilation into the higher Buddhic Body.'



*'The state of Divine Rapture is akin to being burned by the fires of Bliss over and over again. **Rapture comes when all our desires have been purified into a single over-arching desire – the Desire to return to our Source the yearning for the Light.** These are the people who are so flammable that the smallest thing will set them off and whoever comes near them will very likely catch their devotional energy, for the nature of the mutated Solar Plexus system, which is where the 30th Siddhi lies, carries this purified frequency out through the aura into the morphogenetic field. **They have stepped willingly into the fires of annihilation - into the primal chaos of Divine Frequencies with just the Desire to transcend.'***

Over this New Moon Solar Eclipse and indeed over the next six months these potentials will be playing out throughout humanity, on many levels through the Shadow/Ego Gift/Soul and Siddhi/ Monadic Christ Consciousness, manifesting according to each one's level of resonance and awareness.

In these times of major shift, division and paradox, it wise to come into your interior space where Silence and Stillness reside – beyond the mind's mental chatter and worry – so that you may discern a higher

Truth flowing in your vibrational field - for it is the quality of this vibrational field that magnetises the Light into the auric field and equally unfolds your outer experiences.

So, at this pivotal time may we open to the Truth of our interconnectedness with all Life and become an instrument, a tuning fork, for Consciousness so that we may share the Boundlessness of Light and Compassion with all Beings.

Love and Blessings to All

1st December 2021

Extract Gene Keys by Richard Rudd