

Cosmic Overview

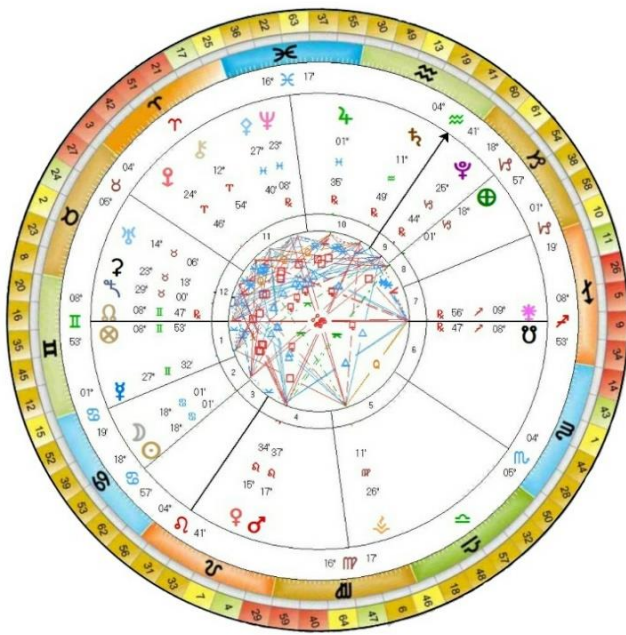
Cancer New Moon 2021



'Consider the Child - the Star brighter than any Star man's mind can create...this nuclear Divinity which radiates an unnameable Glory when it comes, is in fact a creation of such inestimable worth that were Cosmic Scales to be employed, the infant child placed on one tray and all the precious jewels on the other, there would be no possibility of outweighing the Child.'

Jean Houston

'AM' the Light Within the Form I



This month the New Moon will take place on the 10th of July, when the Sun and Moon come together at 18° Cancer 01' at 02:17 BST London UK. Just over a fortnight ago, on the 20th of June, it was the Summer Solstice for the Northern Hemisphere marking the point in time and space when the Sun enters 0° Cancer, marking the beginning of Summer and the longest daylight hours. In the Southern Hemisphere 0° Cancer marks the shortest day and the start of Winter.

The Constellation of Cancer flows with the Light and Consciousness of the 3rd and 7th Rays of Active Intelligence, Synthesis and Magic.

At the personality level the Moon rules Cancer. The Moon links to our earliest childhood memories, imprints and patterns. Each of us as infants, prior to speech, are an open portal, a blank canvas, bringing in the Light of Consciousness, however, we are also

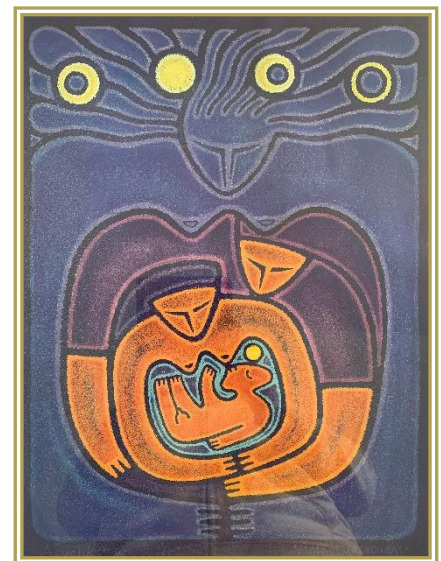
unconsciously absorbing the impressions and emotions that surround us, which ultimately become our subconscious beliefs that we carry into adulthood.

The infant has no sense of identity – this comes later when the child identifies with a name, with being a 'separate' individual, a boy or a girl, and learns that she/he belongs to a particular culture, or to a particular religion, but in Truth the Soul of the infant and the adult is beyond any and all of these labels.

The journey for each of us is to move beyond an emotionally subjective reaction to life to becoming identified with Universality. At the personality level of Cancer, the 4th Ray of Harmony Through Conflict is operating through the individual, but as the individual learns to become less subjective and develops a Universal Compassion for Life, the Love of the Mother begins to establish. On the Soul level the Quality of the Mother is the forerunner of Christ Consciousness and the mark of a Soul centred Cancerian. At this stage the 4th Ray gives way to the 6th Ray of Devotion and Neptune becomes the planetary ruler of Cancer.

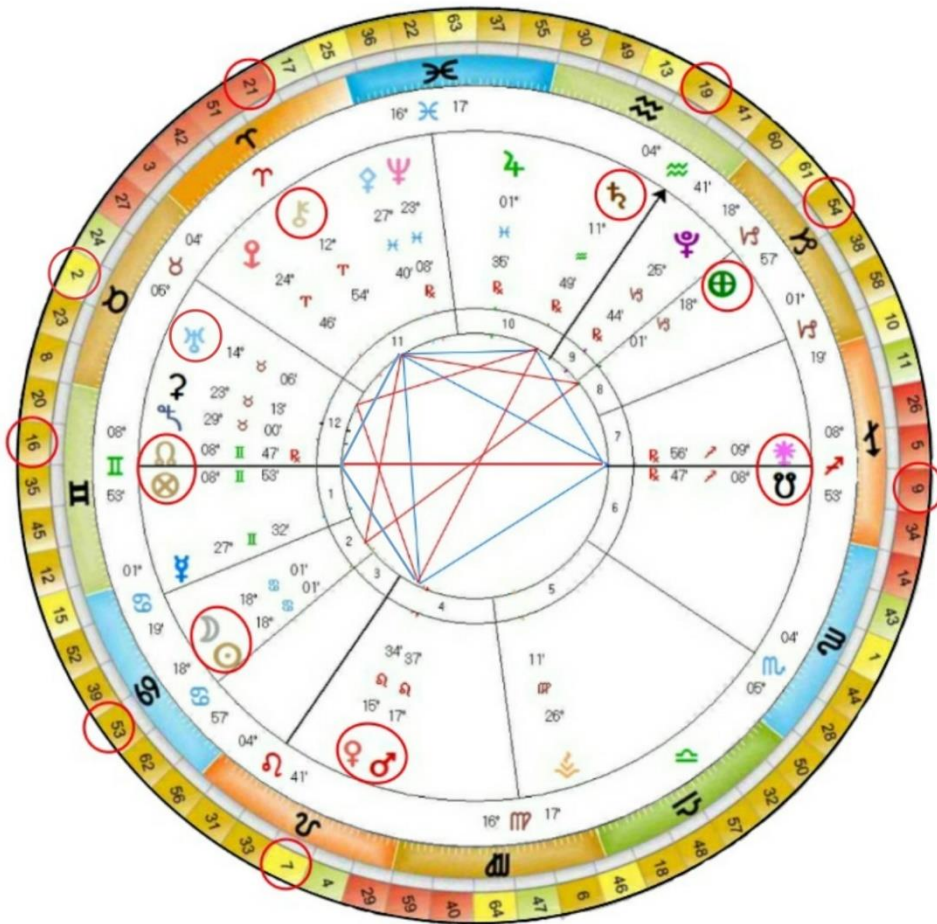
The radical shift that we are all going through at this time, whether we are consciously aware of it or not, is the potential to realign our energetic beings, when, whether Man or Woman, we can integrate the Divine Feminine, with the Divine Masculine, so that the Heart chakra is the focal point of interaction and Communion.

We are each, from a Soul level, both male and female, and we each need the Universality of our Child. This is the Child, the Consciousness, that is waiting to be released from the Collective fear that has underpinned humanity for so long. The 'Child' can only come into this state of being, when Man and Woman are aligned and Heart Centred, when each have integrated both the male and female polarity within and they are complete within themselves. This is the foundation and the next evolutionary Spiritual state for mankind – Soul embodied - Christ Conscious Human Beings.



The 7th Ray primarily involves the Etheric levels and thus governs the true Magical work - the Spiritualising of Forms.

Chart for the New Moon in Cancer



Cancer New Moon 10th July 2021 02:17 BST London UK

<https://www.timeanddate.com/moon/phases>

At the time of the New Moon, as you can see from the above chart there are several major planetary aspects occurring. Looking first to the Sun and Moon which are forming a T square with the Earth \oplus and Chiron ♄ the Sun and Moon are on Gene 53 known as ***Evolving Beyond Evolution*** which has the Shadow of ***Immaturity*** from which comes the Gift of ***Expansion*** leading ultimately to the Siddhi of ***Superabundance***.

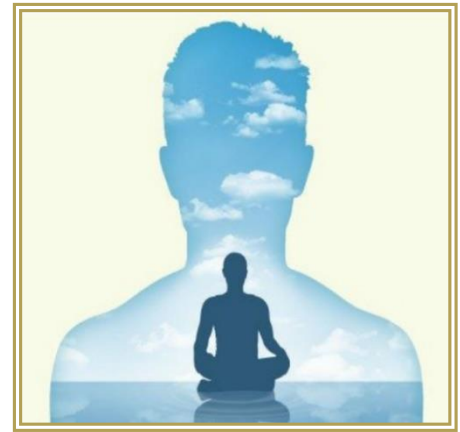
When we are not integrated and balanced within the electro-magnetic impulse, of the male female polarity, which, when in alignment gives access to our Soul, then we are, quite simply, immature.

'The Shadow of Immaturity is rooted in the human tendency to see ourselves as separate from each other and Nature. The human mind has enormous difficulty seeing itself as a collective organism that is deeply embedded in Nature and the Earth. This sense of separateness, being alone, underlies the primal fear of death. Immaturity is nothing more than loading bent arrows into your bow and because of this, no matter how well meaning, your actions, at this frequency, they can only lead to further disharmony. It is through the two Shadows of Greed and Immaturity that humanity must finally awaken to its nature as a single organism. As you come to understand this vast and sweeping insight, your heart begins once again to open and trust in Life just as it is – with no opinion, no judgement, no attachment and above all, no fear.'

'The Gift of Expansion demands that individuals transcend personal opinions, views and attempts to understand what is going on. It takes enormous trust to allow your life to truly expand because it appears to the mind to become more complex, whereas in fact it is moving into greater synthesis. Expansion is a process of transcending and including. In a human being, the expansion of frequency can only occur in one way – through the heart.'

'To one who has awakened through the eyes of the 53rd Siddhi humankind is both a Being and a Becoming. The form endlessly evolves awareness and expands, but the Consciousness never changes.'

'We are indeed entering a new evolutionary phase right now in which human awareness seems ready to make a great quantum leap in terms of its expansion, but even though awareness may expand, Consciousness does not expand since it is already everywhere and everything and even everywhen. This is the crucial truth to understand. Beneath the form, Consciousness never changes or evolves or expands or contracts. It simply is.'



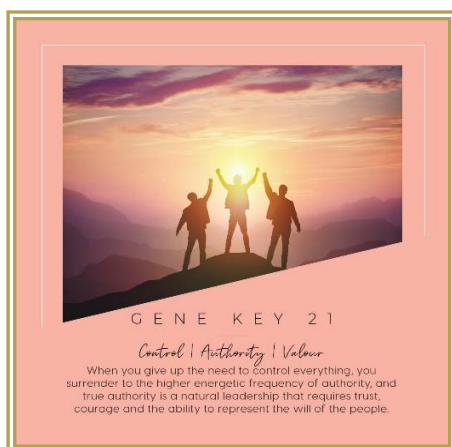
'Superabundance is a space beyond frequency.... the 53rd Siddhi represents the state beyond and behind awareness known as Pure Consciousness.'

The Earth at 18⁰ Capricorn 01' is on Gene Key 54 known as **The Serpent Path** which is assisting us to move through the Shadow of **Greed** to the Gift of **Aspiration** and on to the Siddhi of **Ascension**.

'There is a fine line between Greed and Aspiration the 54th Gift. When the 54th Shadow transforms into a higher frequency the Gift of Aspiration is born. Aspiration here refers to the energy to aspire to something beyond the material realm. Aspiration contains within it the seed of all Higher Consciousness. At the Gift level, Aspiration has to do with working for others for the benefit of others. The 54th Gift aspires to a higher vision of prosperity. Here we see ambition moving beyond the personal and into the communal. These Souls want their entire community to thrive in order that they can draw more and more people up the hierarchy away from the self-destructive patterns of the lower frequencies. As the energy of the Gift of Aspiration reaches higher frequencies it becomes Spiritual.'

'The 54th Siddhi concerns the notion of Ascension – the continual alchemical transformation of matter into Spiritual Essence. Here the base energy of ambition is experienced at its highest frequency and becomes the continual pressure to keep ascending up the hierarchy. Not the social or material hierarchy, but the spiritual evolutionary ladder which consciousness itself ascends on the return to its own Source. True Ascension is activated automatically through the lower frequency of Aspiration.'

'At a certain point a spontaneous physical transformation begins to wrack the body. The process of Ascension takes over and you cannot stop or interfere with it. This process continues until the physical body becomes more and more translucent. One aspires and sooner or later one Ascends.'



Turning now to Chiron ♄ Chiron is the focal point of this T square and seeks to bring resolution and healing to the Shadow patterns held within Gene Keys 53 and 54 and Gene Key 21, which Chiron is activating at this time, known as **A Noble Life** moving through the Shadow resonance of **Control** to the Gift of **Authority** to the highest frequencies of **Valour**.

'One of the major issues to plague human beings and the cause of enormous conflict and violation of basic human rights is Control. Wherever you find the 21st Shadow you will find someone either too weak to control anything at all, or someone with a deep-seated need to control everything in their environment.... The ultimate root of this Shadow is distrust in Life itself This is the real human disease.'

'If you assert Authority through the hierarchical base of the 21st Shadow then you rule through control and fear, which never inspires true Loyalty. True loyalty can only be maintained when the frequency of love outweighs the frequency of fear. Such people are given Authority by others and this is the real

meaning of Authority. Authority cannot be asserted through will. It can only be afforded/given through trust. **True Authority unites rather than controls.** The relationship between Authority and submission is the relationship between yin and yang, between the male and female energies throughout our Universe. The Male Female polarity balanced so that the Yin/Yang flow is finely and exquisitely tuned into service.'



'In the 21st Gift we see that true Authority based on service inspires loyalty. At the highest level this coupling of love and power gives way to the ideal of Valour.'

'**Valour is the highest frequency of the 21st Gene Key – it is an energetic field released into the world through a chemical signature within your genetics that underpins nobility.** Valour is nobility in action. It contains virtue, wisdom, love, courage and above all sacrifice.'

'As an archetype Valour signifies the ending of all karma, even though the states preceding it often carry a great deal of karma. Valour is forged on the anvil of life. **No matter how muddy the waters are, you have to realise your pure nature can never be soiled.** To be a master, that is a Being who has attained realisation through this Siddhi you must lead by example. Valour is an act of absolute self-surrender in which you lay your entire being on the line for a higher ideal. **Valour represents the surrender of the male principle of control to trust represented by the feminine principle of trust.** The power of Valour could be summarised as the courage and love that must be found within the lower self to die into the unknown world of the Higher Self.'

At the time of the New Moon there are two Kite Formations – first we will look at the Kite which is created by Chiron♄ making a trine, a 120° aspect to Venus♀ and Mars♂ and also to the South Node♁ and Juno♃ and sextile, 60° to the North Node♁

This whole energetic is speaking to the need for balance between the expression of the masculine and feminine energies and a reassessment and revisioning of how these archetypes are expressed. Venus and Mars represent the two expressions of the polarity. Venus is the archetypal energy of love and beauty, the feeling nature, seeking to collaborate and to join with others and Mars is the archetypal energy of the Warrior, the impulse for action, strength and individuation.



For generation after generation men and women have tended to divide these energies – women have been encouraged to identify with the archetype of Venus and would look for Mars to be expressed through the men in their lives, and men would be encouraged to embrace the archetype of Mars and look for Venus to be expressed through the women in their lives. This 'half not whole' - seeking for another to complete oneself - is underpinning what is referred to as the 'Battle of the Sexes', for in truth each one of us needs to embrace both the Venusian and Martian energies, so that Mars and Venus work in collaboration and harmony within each of us.

The need to balance these impulses is crucial at this time so that we may enter into higher awareness and a mature recognition of our purpose on this plane, which is to grow beyond reactions and dramas to express the qualities of Universal Consciousness. How fitting it is that Venus and Mars are together at the time of this New Moon on Gene Key 7 moving through the Shadow of **Division**, to the Gift of **Guidance** to the Siddhi of **Virtue**.

'The 7th Siddhi is an energetic blueprint hidden inside each human being. True Virtue has nothing to do with morals or behaviour. Anyone can behave in a pseudo virtuous fashion, yet have none of the power of this Siddhi. **Leadership is determined by genetics, but the quality of leadership is determined by the frequency passing through those genetics.**'

'Here in the 7th Siddhi we find visionary leaders, but far more importantly, we find virtuous leaders. The Kabbalists have a phrase – Repairing the World – they say that when the Creator created the world he created a series of vessels to hold the Divine Light, but as the Light flowed down into these vessels they shattered and fell towards the realm of matter.'

'Thus, we now live in a world of countless shards of the original vessels in which the Divine Light is trapped. They say that every virtuous act committed by a human being helps to repair one of these broken vessels.'



'The 7th Shadow represents the force that shatters the vessel, the Gift of Guidance begins the process of reuniting the shards and the one in whom the 7th Siddhi manifests becomes the Adam Kadmon – the Perfected Vehicle of Divine Realisation. The 7th Siddhi waits for a specific moment in time to awaken in the collective. In the book of Revelation this 7th Siddhi is represented symbolically by the opening of the Seventh Seal, which precedes the return of Christ consciousness.'

The South Node, which represents our past Collective Karma, is together with Juno, representing the Sacred Marriage, the balancing of the electro-magnetic polarity - blending the drive of Mars with Venusian Co-operation, Union and Harmony so that there is a mutually beneficial support system operating through the Heart that underpins our actions, focus and purpose, giving an abundance of energy.

The Shadow that is held within the South Node on Gene Key 9, the culmination of humanity's past Karma. Is ***Inertia***, the Gift is ***Determination*** and the Siddhi is ***Invincibility***

'Without a sense of purpose, human beings move round and round in circles creating energy fields that prevent abundance. So, if you are low or lacking in energy and you are finding it hard to get enthused about your life, the answer may well lie in the 9th Shadow.'

The Gift level of this genetic code is Determination. The 9th Gift fuels all Determination. The Gift of Determination is built upon the rock of each and every small act. 'Every intentional act is an act of magic'. Even the smallest act has a spin off effect that ripples out into the Universe – actions made out of resentment or fear reinforce the Shadow frequency, in both the individual and the World at large - whereas acts done in joy or service create more joy. All the little acts that are done with Heart begin to build up an inner momentum that eventually becomes unstoppable. The force of the entire Universe begins to gather behind such a person. Thus the 9th Gift reveals one of the great secrets of the Gift frequency – the more you tread the Path of the Heart the easier it becomes.'



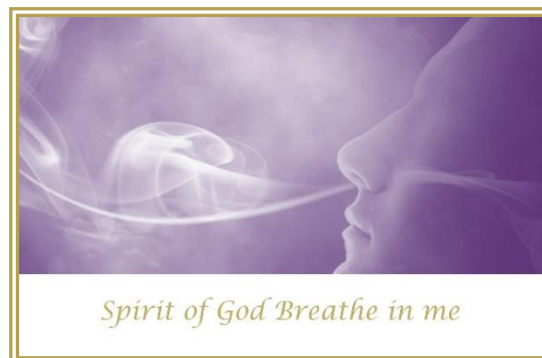
'Invincibility can be defined as merging your individual awareness back into the Consciousness of the Universe and the only force in the Universe that is truly Invincible is Love. Love only knows giving so it creates a vacuum which in turn continually floods with more Love. When a human being attains this Siddhi their life becomes an expression of the Invincible power of such a Love. What the 9th Siddhi teaches is that every act that you make is of vast importance to the whole of evolution. Every intentional act is a magical act, setting in motion either creativity or decay.'

'Such people become the focal point for an intense frequency of Divine Light with a very specialised task to fulfil on Earth.'

Looking now at the North Node♁ which points the way to how to assist humanity to move their consciousness beyond ***Inertia***, we find Gene Key 16, known as ***Magical Genius***, which has the potential for ***Mastery***, flowering through the Shadow of ***Indifference*** and the Gift of ***Versatility***.

*'At the Shadow frequency one of the most powerful and pervasive forces that keeps you from perceiving a higher reality is Indifference. **Indifference is an energy field created by all human beings on this planet who are not doing what they would really love to be doing.** The only reason for this state is fear – a fear of leaving the comfort zone. There is a collective energetic wall created by the diffusion of one's responsibility to follow one's true purpose and vision that maintains a 'lock down' on creativity. Indifference is an expression of the collective frequency of humanity operating through your genetics. **Indifference simply arises because the mass consciousness does not yet see its own true nature - that is, it doesn't yet realise itself as a holistic entity.'***

'Versatility is driven by the dynamic energy of enthusiasm – the feeling that you are doing something thoroughly enjoyable, which also happens to improve people's lives and serve the whole. Versatility is a frequency and at this level natural abilities emerge with ease. At the 16th Gift level of frequency something remarkable occurs – no matter what your personal genetic makeup, you can draw upon any of the 64 Gifts through the Morphogenetic Field that links all states of the same frequency together.'



'This is the true meaning of this 16th Gift – it is the ability to tune into any Gift you need and make use of that Gift.'

*'The enthusiasm inherent in the 16th Gift also has its manifestation in the Siddhi where it shows its true nature. **Enthusiasm, deriving from the Greek meaning 'To be possessed by the breath of God' floods the human being and he/she merges with Divine currents, shattering their identification with the world of form.** The 16th Siddhi has an interesting connection to the 35th Siddhi of Boundlessness and on closer analysis one can see why. As one of the Miracle Siddhis, the 35th Siddhi's sole purpose is to expand the average human's perspective on life exponentially. **The one who has attained this Siddhic level displays Mastery over Creation – their powerful actions, seen as miraculous, pull humanity out of Indifference.'***

The second Kite Formation is formed by Saturn ♄ which is opposite to Venus and Mars and is on Gene Key 19. Saturn is the Gatekeeper, if you will, for allowing access to the next level of Consciousness which can only be attained when we have matured sufficiently to be psychologically sound and anchored within our humaneness. So, it is interesting to see that Gene Key 19 is known as the **Future Human Being**.

*'The 19th Shadow of Co-dependence has its roots deep within our tribal past. Co-dependence refers to the state of consciousness below independence. To be independent means to rely only upon yourself, whereas to be Co-dependent means to rely on outside agencies. **As long as man believes in a God outside of himself the frequency of our planet will remain at the level of the 19th Shadow.** It is out of the 19th Shadow that all the world religions have been created. However, the 19th Shadow is currently undergoing a huge genetic mutation, which means that man's reliance on religion is also undergoing a transformation.'*



*'With the Gift of Sensitivity, these individuals become highly attuned to the needs of others and the environment. In today's world people with the 19th Gift are likely to use their Sensitivity in any field where people are working together in groups. The 19th Gift is also the gift of touch. **It does not have to be literal touch although it can be – many of these people are gifted healers or therapists.** Their ability to unconsciously sense the needs of others means they are often seen as psychic. **There is a heightened awareness of other worlds, realms and kingdoms of life forms and the ability to communicate with them.'***

*'The 19th Gene Key is one of three primary portals along with the 62nd and 12th Genes that allow humanity access to other evolutionary kingdoms within nature. **These Kingdoms, which have often been referred to as the Angelic or Devic realms, are Planes of Consciousness that follow a similar evolutionary pattern to humanity but in parallel dimensions.'***

'The 19th Gene Key behaves like a genetic marker in human DNA – when you hit a certain genetic frequency that marker activates the portal allowing information to cross clearly between these parallel worlds. This Gift truly spans all realms and its future function, as we shall see, is to collapse the barriers that separate them – for these are the Shamans who fuse the ancient magical realms with the modern material plane.'



*'The path of frequency through the 19th Gift goes from Co-dependence to independence and finally to interdependence. Interdependence represents a quantum leap beyond the other two and its realisation is the future destiny of our species. **Through the 19th Gene Key you can see how each level of frequency has to transcend itself entirely.** In surrendering your small self, you attain the realization of your ultimately greater Self - to Sacrifice your individual identity and experience yourself as One with all Life as well as the Creator of it. **This is the secret of mystical initiation.'***



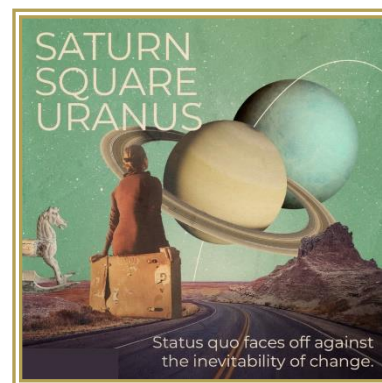
*'The 19th Siddhi shares a profound connection with the 49th Siddhi of Rebirth. These two Siddhis represent the key mystical process that will eventually overtake the human species - the ultimate realisation that all sacrificial deaths lead to Rebirth. Life is a living chain of Sacrifice. **Consciousness is now beginning to outstrip man and is reaching out for a higher form. But the new form must emerge out of the old one, so deep within Human DNA new mutations are being triggered.'***

*'The 19th Siddhi contains the secrets of this mystical initiation. **They are highly sensitised bridges to the new human and have the ability to siphon information about the new paradigm from behind the veil of the future into the present – they see the new form emerging and do their utmost to prepare people for the coming consciousness shift.'***

And finally, if you look at the chart, you will see there is a second T square that is created by Saturn being opposite to Venus and Mars and square to Uranus ♃

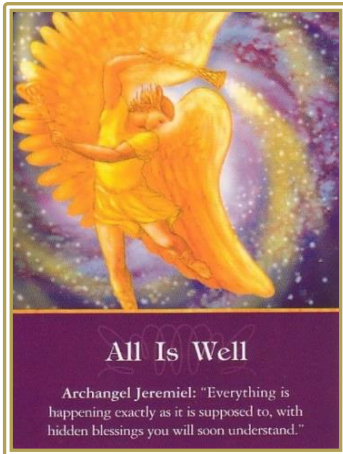
Saturn and Uranus have been in this 90° aspect since December 2020, coming exact on February 17th and June 14th and they will be exact again on December the 24th. However, this planetary aspect will have an influence playing out in the background right through to September 2022, when once again Saturn and Uranus are squaring up to each other. This period is bringing in major shifts and changes for us all.

Saturn and Uranus have a very different archetype and essence – Saturn focusses upon the physical plane and Uranus is focussed on the transpersonal plane - they also have opposite functions – Saturn builds and holds on to structures and Uranus breaks old patterns in order to birth the new. Uranus brings in an expanded Consciousness and a freedom from restriction, however, as already shared, there are no quick fixes with Uranus, we must master and do the work of Saturn, which is to become balanced and psychologically mature, before we can benefit from the Uranian frequency. As well as psychological maturity, we also need a healthy body in which to integrate the higher frequencies.



So, during this period of time that we are passing through, we will witness many changes, but at its core, this alignment is seeking reconciliation and a reunification, between our material and our Divine nature.

Transiting Uranus is on Gene Key 2 known as **Returning to the One** guiding us through the Shadow of **Dislocation**, to the Gift of **Orientation** to the Siddhi of **Unity**.

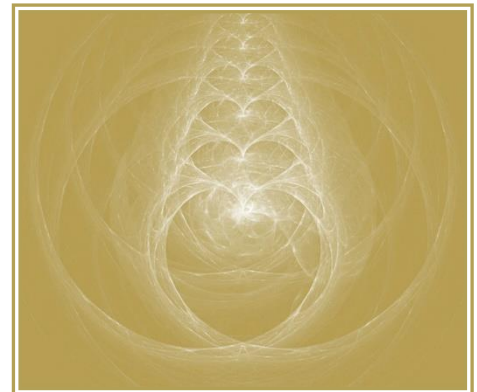


‘Gene Key 2 is the most archetypically feminine of all the Gene Keys – based on Unity, surrender and trust. Of all the 64 Gene Keys, the 2nd Gene Key and the journey it represents contain a beautifully simple distillation of Cosmic wisdom. As the 1st Gene Key tells the story of the great masculine principle of energy and Light, the 2nd Gene Key grounds this story into the world of form – it teaches us that there is a purpose to everything in existence.

*At the Shadow level, however, this Gene Key gives rise to the human perspective of loneliness, fear and rejection that is rooted in our biological functioning. **Separated from our own innate nature, a collective fear has been generated that pervades our individual lives as well.***

‘At the Shadow frequency you experience dis-orientation, whereas as you begin to reach into the Gift dimension, you become re-orientated. The Gift of Orientation has two faces. The Gift of Orientation either comes as a shift in your awareness that affects your actions, or it comes as a shift in your actions which then catalyses a shift in your awareness. Whichever path is taken there is an increased realisation of synchronicity occurring in your life. **Evolution itself is drawing you inexorably along the path towards awareness of your Unity and Oneness.** The 2nd Gift has a special role within the DNA in that it creates an ‘Attractor Field’ around you. As the frequency through the 2nd Gift rises you live more harmoniously and the electromagnetic power of your aura increases.’

‘The 2nd Siddhi describes the state of enlightenment or awakening. It is the cornerstone of all the Siddhic states, being as it is the essence of the Divine Feminine. The 2nd Siddhi, as do all the Siddhis, carries a specific mythology when it manifests through an individual into the world of form. As one of the primary pillars of our DNA the life of one who lives within this Siddhi is of great relevance to our evolutionary history. These beings exert an enormous magnetic influence on our entire planet. **Although it may sound like science fiction the expression of the 2nd Siddhi in a human being actually changes the direction of the Earth as it moves through space.’**



‘The 2nd Siddhi can therefore only be born in the world of humanity if our whole species makes a leap in consciousness. Oneness cannot be comprehended, only lived - it is the unification of all opposites, this cannot be described, only experienced. It is the original nature of Consciousness itself. A highly beautiful plan unfolding in time and space, swept along by currents of evolution. **This is our final destiny as a Species - to realize our state of Oneness and Unity with All That Is.’**

We chose to incarnate, to be here for this pivotal time so that we might dispel and bring an end to ‘The long held illusion of separateness to reveal a Universality in which Soul centred individuals, become the channel for the Light of the World, which, when expressed through the Constellation of Cancer, brings unlimited nourishment to all Forms and Creatures of Life.’

Love and Blessings to All